

THE THERAPEUTIC LIBERTY SWING AMERICAN EDITION

Warranty

Swing Drawings

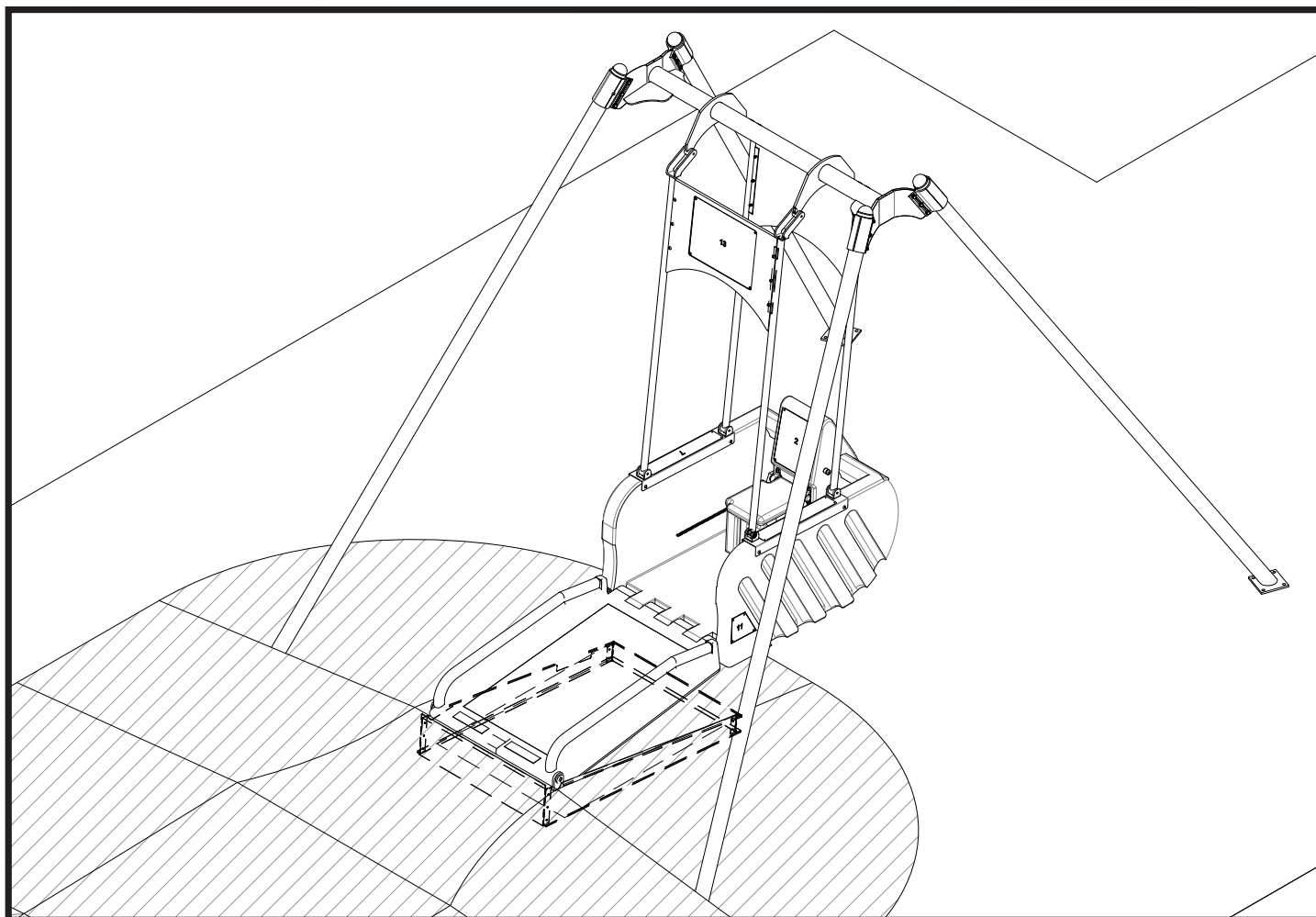
Components List

Swing Installation Instruction Procedure

Special Soft Fall Instructions

Minimum Soft Fall and Fencing Plans

Maintenance Program



JENWAY INDUSTRIES PTY LTD

44 Anderson Rd

Mortdale 2223

NSW Australia

Ph: (02) 9580 6981

Fax: (02) 9580 8398

Email: w-devine@bigpond.net.au

JENWAY INDUSTRIES PTY LTD
44 Anderson Rd
Mortdale 2223
NSW Australia
Ph: (02) 9580 6981
Fax: (02) 9580 8398
ACN: 001 429125
Email: w-devine@bigpond.net.au

“THE THERAPEUTIC LIBERTY SWING” WARRANTY

Your “Liberty Swing” has been manufactured to a high standard of quality control and we therefore extend to you, the original purchaser, a *five* year warranty from the date of purchase against faulty parts or workmanship provided the “Liberty Swing” has not been misused or mishandled. During the warranty period, we undertake to rectify any “fault” or “failure”. Our warranty is subject to your compliance with the following conditions in regard to which our ruling shall be final and conclusive.

Conditions of Warranty

1. The warranty extends only to “faults” and “failures” in the “Liberty Swing” occurring during normal use of the “Liberty Swing”, and does not extend to defects caused by misuse, excessively harsh treatment or other mistreatment of the “Liberty Swing”, whether deliberate or accidental.
2. The benefits given to the Purchaser by this warranty are in addition to all the other rights and remedies which the Purchaser has in law.
3. The invoice is the ultimate reference and should be kept as the proof of purchase.
4. A “fault” is a pre-existing condition which results in a piece of equipment not performing as per manufacturer’s specification.
5. A “failure” is a spontaneous occurrence which causes a piece of equipment to cease operating in the way it originally did.
6. Costs of installation of replacement parts shall be at the cost of the Purchaser and repairs to equipment for problems that prove to be non-warranty will be charged at our standard rates and paid for by the Purchaser.

LIBERTY SWING COMPONENTS LIST

(18) On/Off Device	1	included:
(6) Torsion Rod	1	
(4) Torsion Bracket	1	
(6a) 32mm Gal Tube	1	
(8a) Locking Scutch Plate	1	
(7) On/Off Device Support Bracket	1	
(17) Capsule	1	included:
(9) Seat Belt	1	located in compartment in rear of capsule
(8) On/Off Device Lock	1	located at side of capsule
(3) Wheel Locks	2	located either side of rear of capsule
(20) Internal Seat	1	
(15) Seat Belt Anchor Points	2	
(16) Top Swing Cross Bar	1	
(19) Capsule Support Arms	4	
(10) Post Legs	4	T-Nuts,Screws, Female/Male clamps attached
(10a) Post Leg Extension	6	
(11) Devine Liberty Swing Signage	2	
Spacer Panels		
(14) Sign on post (How to start/finish ride)	1	
M.L.A Key Supplied	100	
Loctite	1	

One Sign - Restricted area to be attached to entry gate.

Fencing and Soft Fall Not Included

The Liberty Swing meets the following Australian and New New Zealand Standards:

AS1924 Part 1	General Requirements
AS1924 Part 2	Design and Construction Safety Aspects
AS 2555	Guide to Siting, Installation, Inspection and Operation
AS/NZS 4422: 1996 and AS/NZS 4486 Part 1-1997	

SPECIAL NOTE

Whilst the Liberty Swing meets the required Australian and New Zealand Standards the following are required to comply as close to the relevant United States standards and regulations. The Liberty Swing “must” be fenced at a minimum height of 36” with an access gate that is self-closing and fitted with a child -proof locking mechanism, and a sign placed on the gate that reads:

**RESTRICTED AREA, USERS AND CARERS ONLY AS REQUIRED
IN THIS AREA**

(Sign has been supplied)

STEPS FOR SWING INSTALLATION

Note: All dimensions in millimetres and inches.

STEP 1

Place top swing cross bar (16) on ground upside down, so legs can be secured facing upwards.

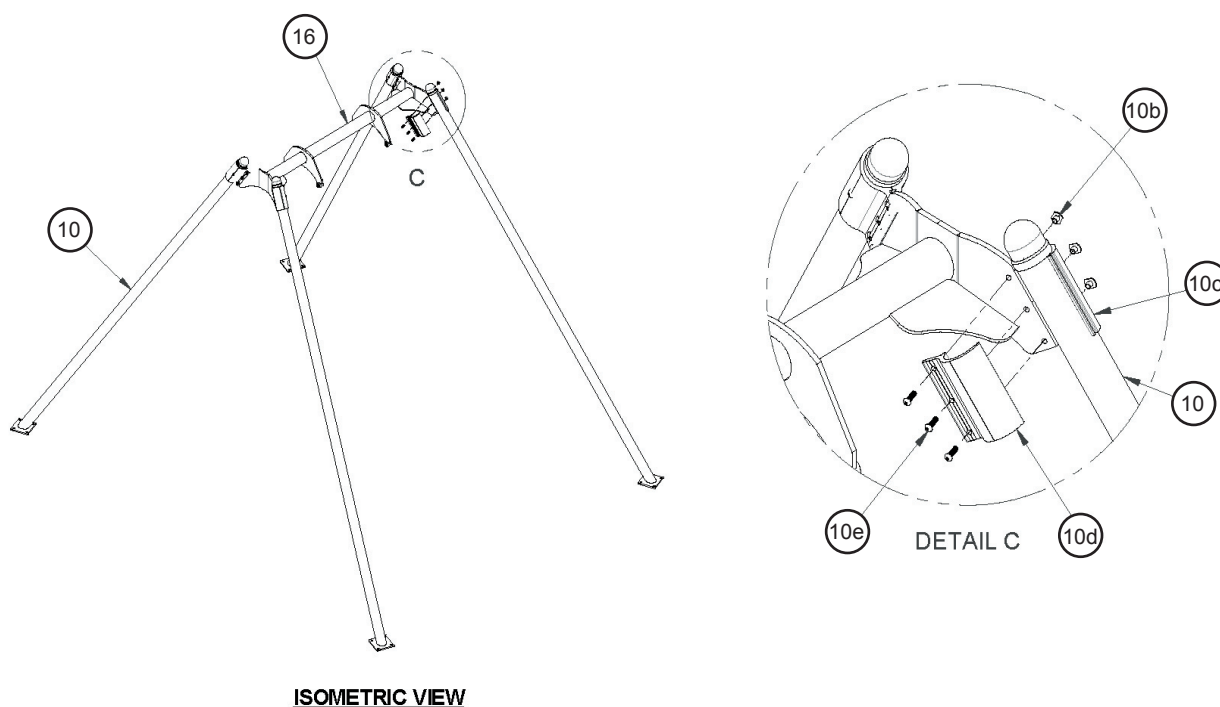
STEP 2

Connection of post legs to top swing cross bar

Remove post button screws, t-nuts and male clamp from the post legs (10).

Place post legs to align with top swing cross bar bolt holes. Attach male clamp to female clamp. Secure in place with post button screws and t-nuts (all fasteners are supplied). Apply *Loctite* provided to the screws, then insert into holes and tighten screws.

Item No.	Title
16	TOP SWING CROSS BAR
10	POST LEG
10b	3/8 T - NUT
10c	FEMALE CLAMP
10d	MALE CLAMP
10e	3/8 x 1.25" SS POST BUTTON SCREW



STEP 3**Position of swing frame**

Invert swing frame so legs are in approximate position where holes are to be excavated.

Locate swing to desired position in a direction that in mid summer, the user's back is facing the sun.

Mark final position of holes to be dug.

STEP 4**Excavation of holes**

Move swing frame to side of working area

Dig holes to depth as per footing instructions drawing

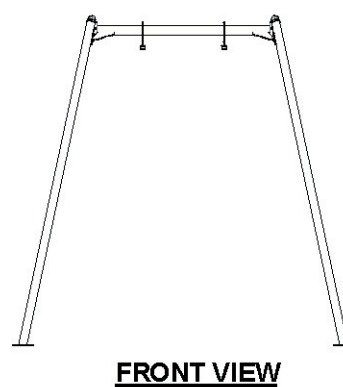
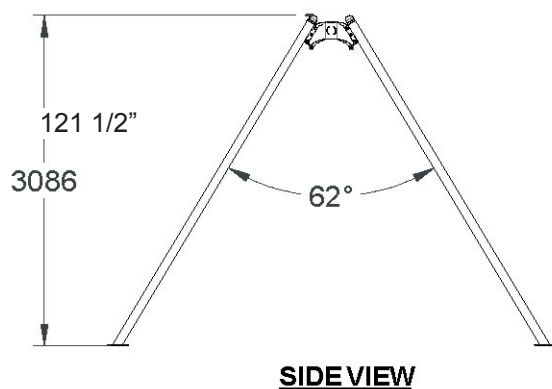
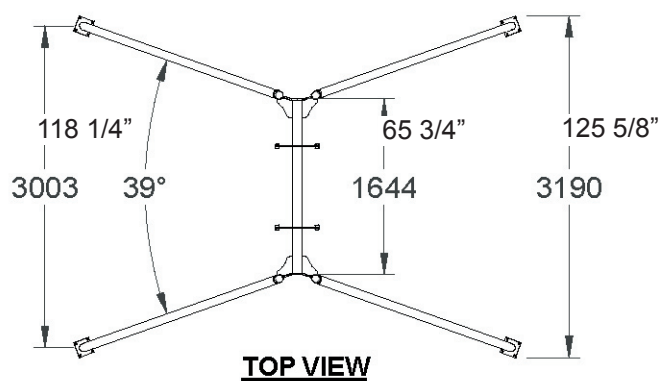
Ensure all excavated holes are levelled

STEP 5

Place all post legs extension (10a) into the holes

Move swing frame over extension plates

Attach swing frame to extension plate with bolts provided



STEP 6**Attachment of capsule**

Attach four capsule support arms (19) to swing head cross bar (16) as per position indicated in swing diagram, with bolts supplied.

Loctite all bolts - tighten bolts.

Attach capsule (17) to capsule arms (19) ensuring that user direction is facing that suggested in STEP 3, with bolts supplied.

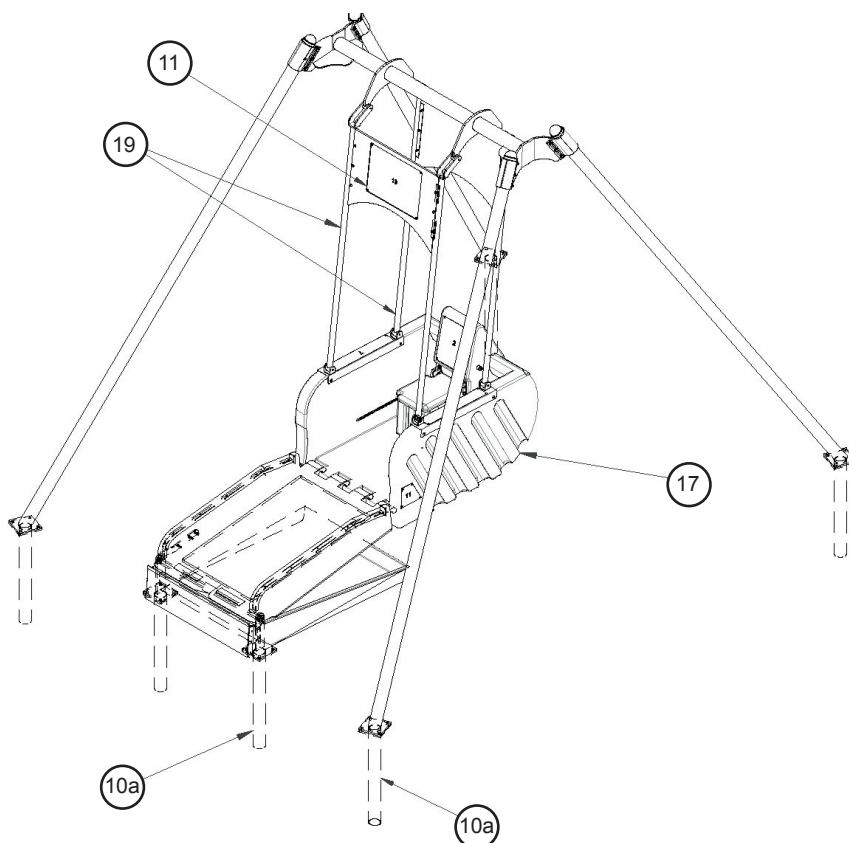
Attach two arched swing signage spacer panels (11) to capsule arms (19), with bolts supplied.

STEP 7**Concrete footing holes**

Concrete four swing frame legs (10) with completed swing frame unit inserted into a level position. Leave for concrete to cure.

(Standard pre-mix 18" Dia. x 36" Deep)

Item No.	Title
19/ 2 OFF	RH CAPSULE SUPPORT POLE
19/ 2 OFF	LH CAPSULE SUPPORT POLE
11/ 2 OFF	SWING SIGNAGE SPACER PANEL
17	SWING CAPSULE
10a/ 6 OFF	POST LEG EXTENSION

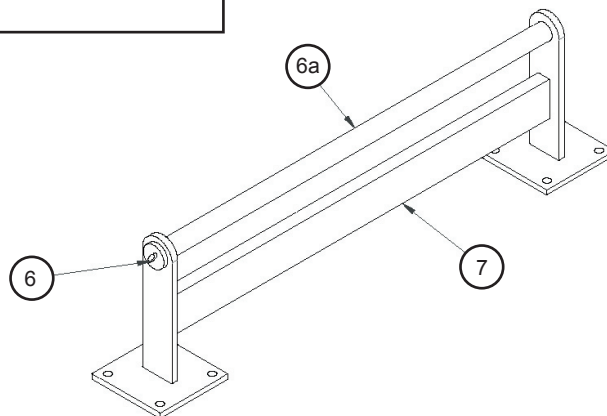


ISOMETRIC VIEW

STEP 8**Positioning of on/off device and on/off device legs**

Remove gal tube (6a) and torsion rod (6) from on/off device leg item (7)

Item No.	Title
7	ON/OFF DEVICE SUPPORT BRACKET
6a	TORSION BAR GALVANISED TUBE
6	TORSION ROD

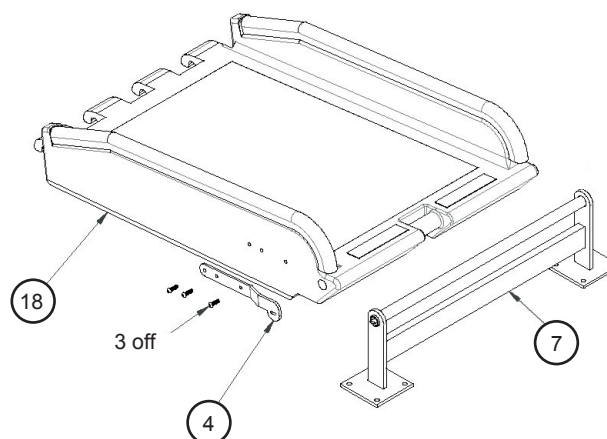
**ISOMETRIC VIEW**

Remove torsion bracket (4) from on/off device (18)

Attach on/off device support bracket (7) to on/off device (18) with gal tube (6a)

Replace torsion bar bracket (4) - **NOT torsion rod (6) at this time**

Item No.	Title
18	ON/OFF DEVICE
7	ON/OFF DEVICE SUPPORT BRACKET
4	TORSION BRACKET
3 OFF	3/8 x 1.25" SS POST BUTTON SCREW

**EXPLODED ISOMETRIC VIEW**

STEP 8

CONTINUED

Prop capsule (17) forward in a parallel position 9 7/8" from vertical position (see attached drawing). This will ensure the capsule will release with clearance from the on/off device

Position the on/off device (18) on the capsule (17) for marking on/off device support bracket (7) hole position

Mark position for on/off device support bracket (7) holes

It is imperative that the on/off device support bracket (7) when concreted is level and plum, failure to do this could adversely affect the operation of the on/off device.

Move on/off device to side to enable holes to be excavated

Excavate holes as per footings drawings

Attach post leg extension (10a)

Replace the on/off device to the capsule

Concrete on/off device legs into position

Ensure the legs are plum and level as this has a direct bearing on the function of the torsion bar.

Leave in position until concrete is fully cured before fitting torsion rod (6) and locking scutch plate (8a)

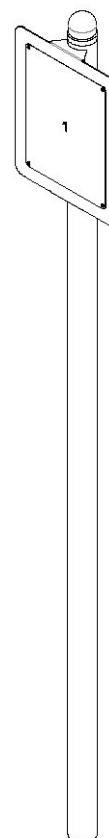
STEP 8

PLEASE REFER TO DRAWINGS DLS-002 AND DLS-004 FOUND AT THE BACK OF THIS DOCUMENT FOR THE VIEWS OF THE INSTALLATION.

STEP 9

Fitting sign: How to start/finish ride

Preferred location is close proximity to the swing and on the side of the key lock. Mark, dig hole and concrete.



STEP 10

Fitting torsion rod

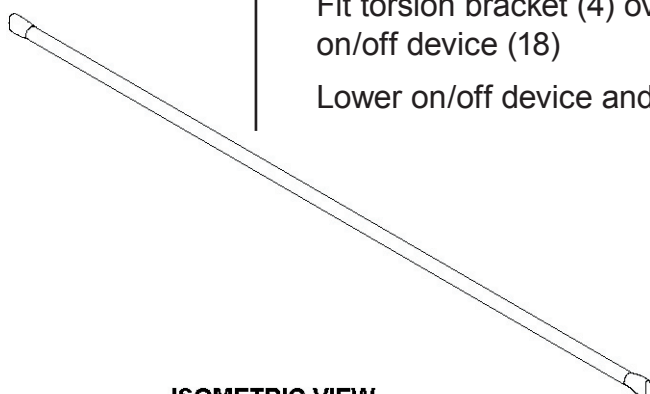
Remove torsion bracket (4) from the on/off device (18)

Insert torsion rod (6) into prior installed gal tube (6a) to key way at opposite side of on/off device support bracket (7)

Lift on/off device (18) off capsule (17) to approximately 60'

Fit torsion bracket (4) over end of torsion rod (6) and bolt to on/off device (18)

Lower on/off device and attach to capsule (17)



ISOMETRIC VIEW

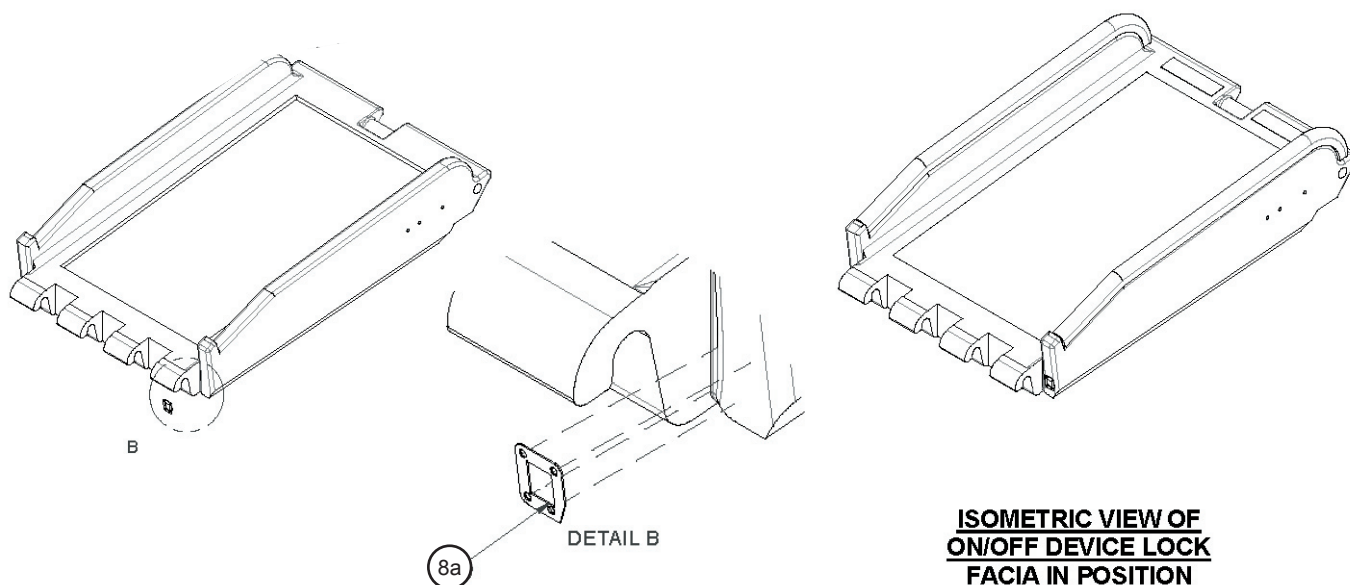
ISOMETRIC VIEW

STEP 11**Fitting scutch plate to on/off device (locking device)**

Mark locations on on/off device (18) where lock rod from lock (8) protrudes through from capsule (17)

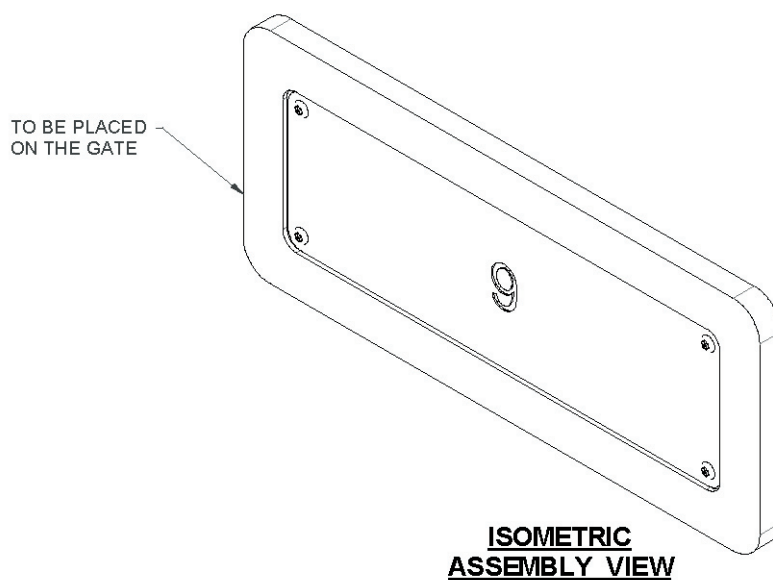
Drill a hole and widen so lock rod engages to on/off device and can be operated by key supplied

Mark holes as per scutch plate (8a) and fix in position with rivets supplied; make sure lock (8) operates smoothly

**STEP 12****Signage**

Fit sign to gate that reads: (supplied)

**RESTRICTED AREA, USERS AND CARERS
ONLY AS REQUIRED IN THIS AREA.**



SPECIAL SOFT FALL INSTRUCTIONS

These instructions relate to the installation of rubber to the on/off device from access and formation of sunken well into which the on/off device will be lowered.

STEP 13

Soft fall installation - on/off device

Soft fall must comply with current standards with a recommended fall height of 110" and fall zone dimensions as shown in the diagrams.

To meet standards the distance between the underside of the capsule and the ground must be greater than 12" over the complete swings circumference.

STEP 13

PLEASE REFER TO DRAWINGS DLS-002, DSL-003 AND DLS-004 FOUND AT THE BACK OF THIS DOCUMENT FOR THE VIEWS OF THE INSTALLATION.

STEP 13

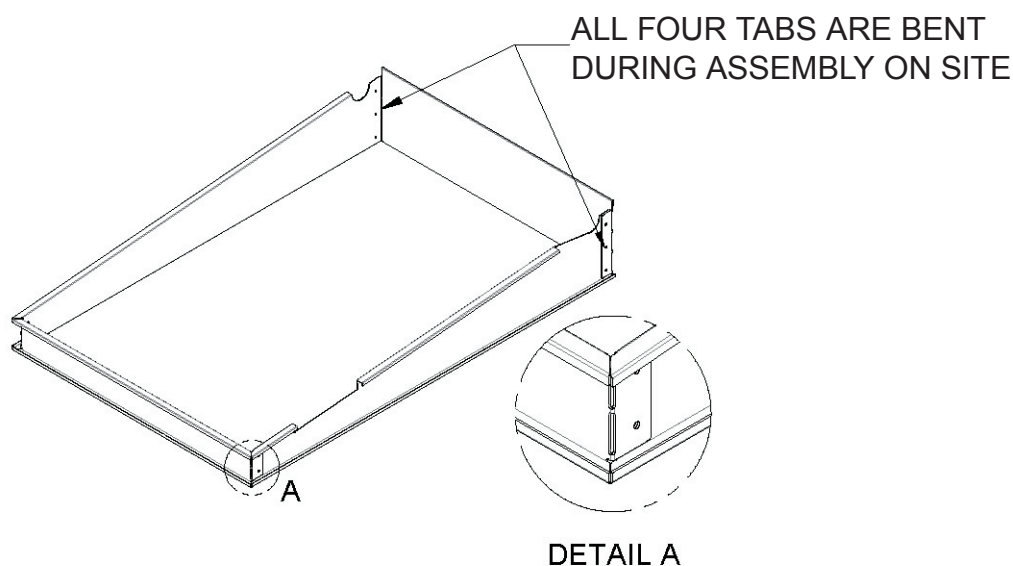
CONTINUED

When laying the rubber access way, the on/off device should be in the locked position to get a good match with the on/off device level - if the on/off device is in the down position, the level will not be right due to the pivot point of the on/off device.

On/off device access is to be formed to allow a transition onto the detachable on/off device

USA: All to comply with (ADAAG) and specifications F1292, 4.5.1 and 4.5.2 and specification F1951

Under side of on/off device rubber to be formed to allow the on/off device (18) to sit at a rest in a well-type setting as shown on drawings with hooks of on/off device (18) level with top of soft fall.



MAINTENANCE PROGRAM

To ensure that the Liberty Swing is properly maintained, please ensure that the inspection checklist is adhered to as stipulated by the table below.

INSPECTION CHECKLIST

Capsule	To be inspected for cleanliness, graphite to be removed straight away.
Nuts/Bolts	To be inspected that all are tight.
Locks	To be checked for good working order.
Seatbelt	To be checked in good condition and have no cuts or fraying.
On/Off Device	Check that it is in correct position and easy to move, check condition.
Site	Check site is clear of all dangerous and unsuitable objects, check site for hygiene problems.
Joints	Check all welds so that they have no corrosion or cracks.

Day	1	2	3	4	5	6	7
First Week	X	X	X	X	X	X	X
Second Week	X		X		X		X
Third Week				X			
Fourth Week	X	X	X	X	X	X	X

It is then recommended that the swing be inspected on a regular basis and be incorporated in to the Council's or Authority's maintenance program.

Warwick Donnelly Pty Ltd

Consulting Structural and Civil Engineers

10 Perry Road Arcadia NSW 2159
Telephone: (02) 9656 1457
Facsimile: (02) 9656 1458
Email: wdpl@inet.net.au
ABN 32 002 074 286

The Manager
Jenway Industries Pty Ltd
44 Anderson Road
MORTDALE NSW 2223

11 April 2006
Ref: L0613A

Attention: Mr Wayne Devine

Dear Sir

RE: STRUCTURAL ASSESSMENT OF THE LIBERTY SWING FOOTINGS

Following our recent discussions, we have completed a structural assessment of the Liberty Swing footings. Please find attached an A4 drawing, number 0613-S01, detailing standard footing requirements and including the design loads for non standard foundation situations.

Liberty Swings to be supported to slabs should be secured at each support leg with 4/M12160 Chemset anchors or equivalent, either galvanised or stainless steel. Anchors should be embedded a minimum of 110mm into the slab with a minimum slab edge distance of 165mm. Slabs should have a minimum concrete strength of 25 MPa, and be designed to accept the working design loads detailed on the above mentioned drawing.

We trust that this assessment will be of assistance.

Yours faithfully

Warwick Donnelly
B.E.,M.Eng.Sci.,M.I.E.Aust.
Director

LIBERTY SWING FOOTING OPTIONS

FOUNDATION MATERIAL TYPE	RATED MATERIAL BEARING CAPACITY (KN/M ²)	D FOOTING DIAMETER (OR SQUARE)	E EMBEDMENT DEPTH	X MAXIMUM NON-STRUCTURAL OVERBURDEN
SAND CLEAN NATURAL AND UNDISTURBED	75 - 100	350 (13 3/4")	650 (25 5/8")	100 (3 7/8")
NATURAL CLAY MEDIUM TO STIFF	100 - 150	350 (13 3/4")	650 (25 5/8")	150 (5 7/8")
NATURAL CLAY VERY STIFF	200 - 250	300 (11 3/4")	600 (23 5/8")	200 (7 3/4")
BEDROCK SHALE, SANDSTONE OR SIMILAR	450 +	300 (11 3/4")	500 (19 2/3")	250 (9 7/8")
INERT ENGINEERED FILL (98% COMPACTION)	150	350 (13 3/4")	650 (25 5/8")	100 (3 7/8")
UNCONTROLLED FILL, PROBLEM SITES AND EXCESS OVERBURDEN	-	REFER TO A STRUCTURAL OR GEOTECHNICAL ENGINEER FOR SITE SPECIFIC DESIGN DETAILS.		

ALL DIMENSIONS IN MM AND (INCHES)

NOTES:

ALL FOOTINGS SHALL BE CAST INSITU INTO SOUND NATURAL GROUND OR ENGINEERED FILL.
BOTH THE BASE AND SIDES OF THE FOOTING SHALL BE CAST TO UNDISTURBED MATERIAL.

DESIGN LOADINGS:

DESIGN WORKING LOADS APPLIED AT THE TOP OF EACH FRAME LEG FOOTING.

VERTICAL LOAD:

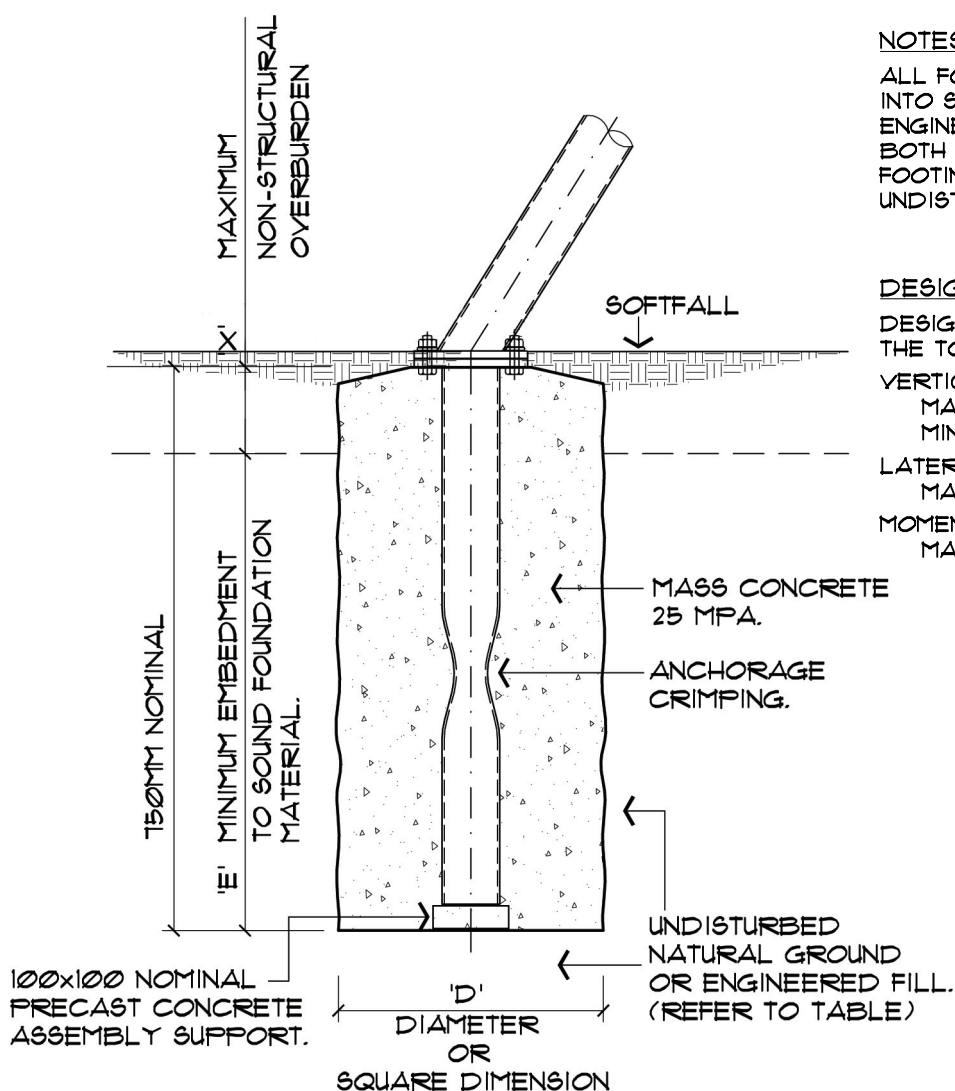
MAXIMUM — 3.5 kN
MINIMUM — -0.5 kN (IE UP)

LATERAL LOAD:

MAXIMUM — 2.5 kN

MOMENT:

MAXIMUM — 0.5 kN M
+ LATERAL RESTRAINT ECCENTRICITY

JENWAY INDUSTRIES PTY LTD
LIBERTY SWING

WARWICK DONNELLY PTY LTD
CONSULTING STRUCTURAL & CIVIL ENGINEERS

10 PERRY ROAD ARCADIA 2159 ABN 32 002 074 286
PHONE: 9656 1457
FAX: 9656 1458

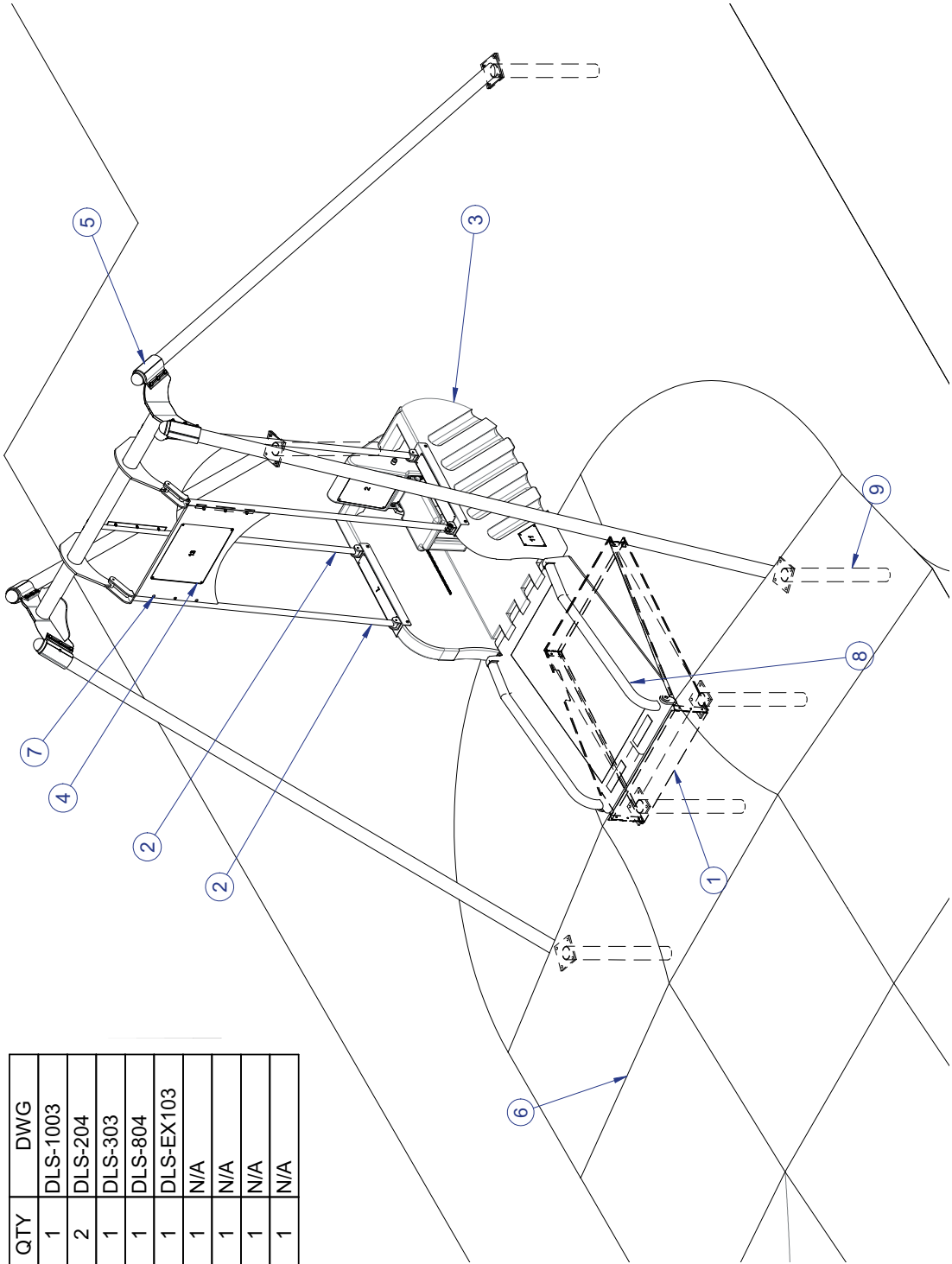
DRAWING SCALE: 1:10, UNO
PLOT SCALE: 1:10

DATE:
APRIL 2006

DRAWING:
FOOTING OPTIONS

PROJECT NUMBER: 0613 DRAWING: S01

ITEM	TITLE	QTY	DWG
1	FRONT GALVANISED SHEET	1	DLS-1003
2	SWING POLES	2	DLS-204
3	SEAT	1	DLS-303
4	SWING POLE ADVERT	1	DLS-804
5	FRAME LEG	1	DLS-EX103
6	SOFTFALL RUBBER CRUMB RAMP	1	N/A
7	3/8 x 1.25" SS POST BUTTON SCREW	1	N/A
8	RAMP	1	N/A
9	LEG	1	N/A

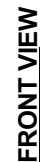


ISOMETRIC VIEW

TITLE	DIMENSIONS IN INCHES	
	DRAWING	REV
TOTAL ASSEMBLY ISOMETRIC VIEW	DLS - 001	04



WHEN RAMP IS ATTACHED THE
SWING IS TO BE 250mm FORWARD
OF ITS CENTRAL LOCATION



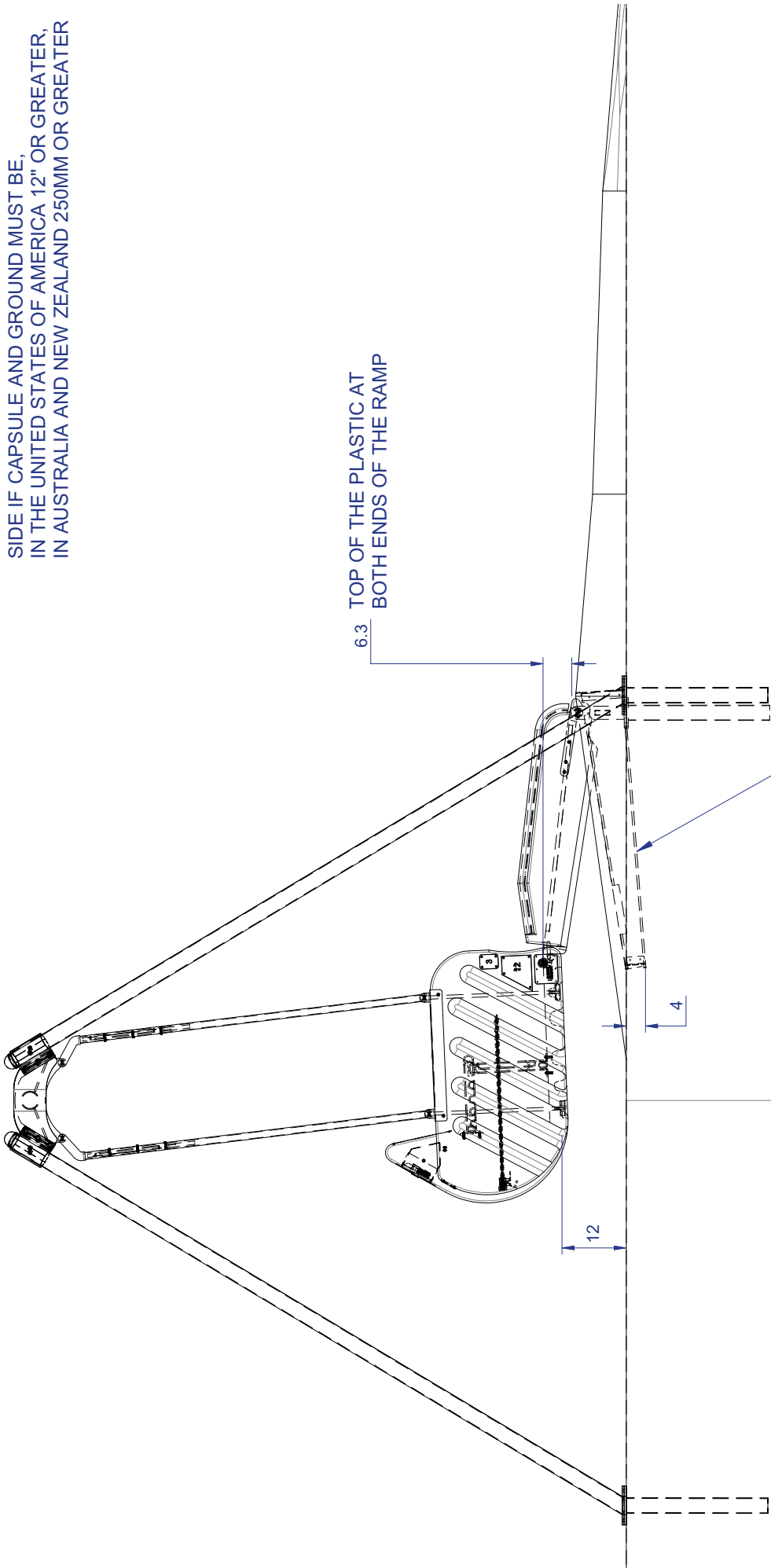
TITLE

TOTAL ASSEMBLY GENERAL VIEWS

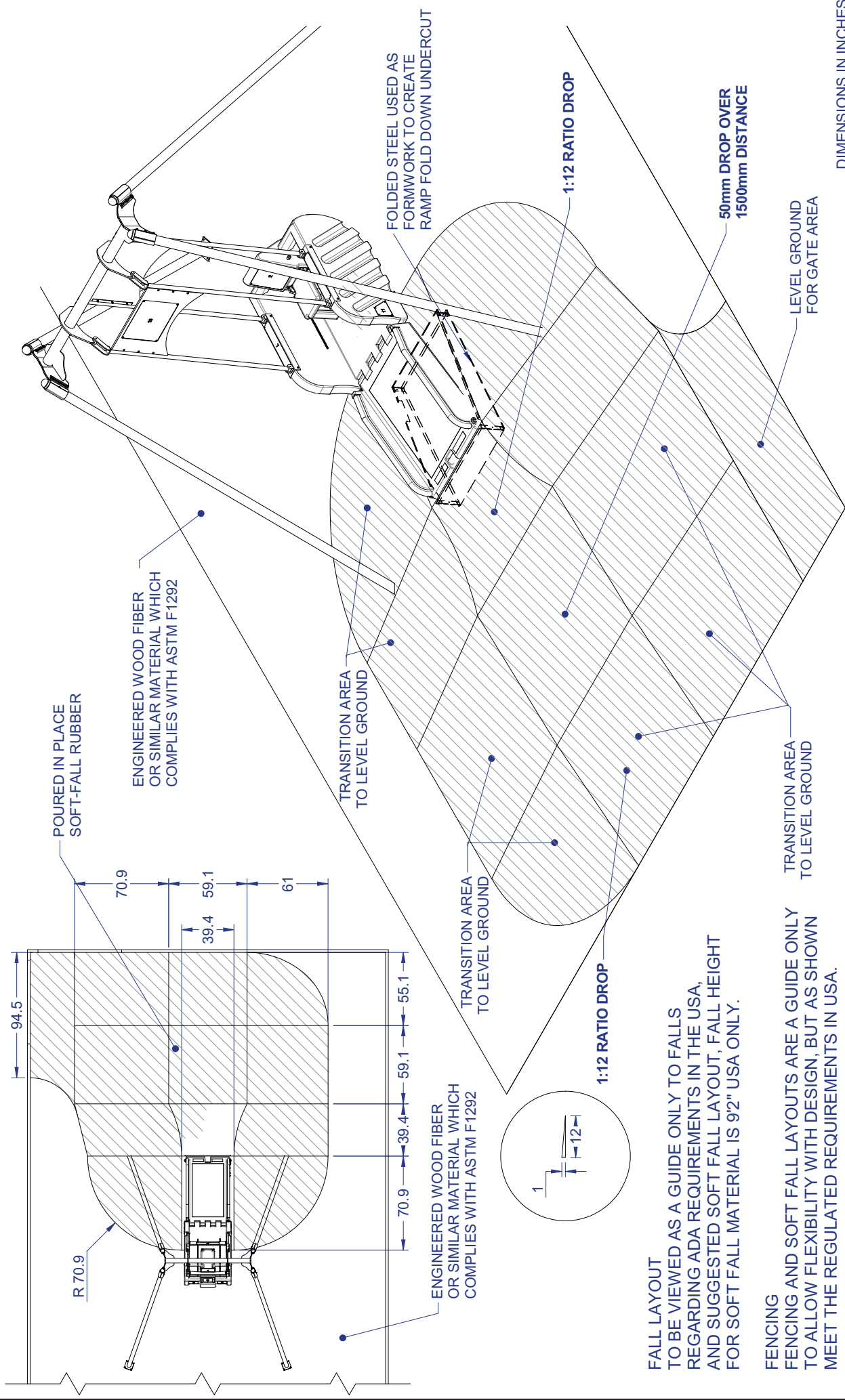
DRAWING	REV
---------	-----

06

CAPSULE HEIGHT
TO MEET THE RELEVANT STANDARDS THE
DISTANCE BETWEEN THE UNDERNEATH
SIDE IF CAPSULE AND GROUND MUST BE,
IN THE UNITED STATES OF AMERICA 12" OR GREATER,
IN AUSTRALIA AND NEW ZEALAND 250MM OR GREATER



TITLE	DIMENSIONS IN INCHES	
	DRAWING	REV
TOTAL ASSEMBLY RAMP SETUP	DLS - 003	01



TITLE		DRAWING		REV	
TOTAL ASSEMBLY RAMP FORMWORK SETUP		DLS - 004		01	

DIMENSIONS IN INCHES